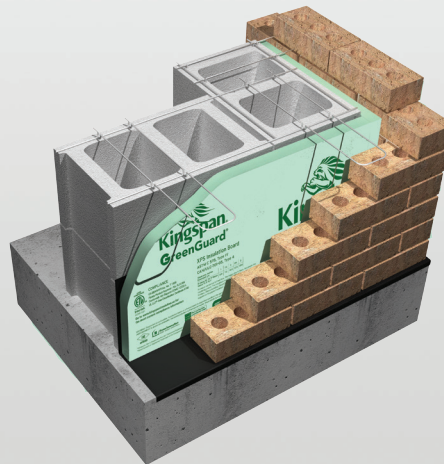
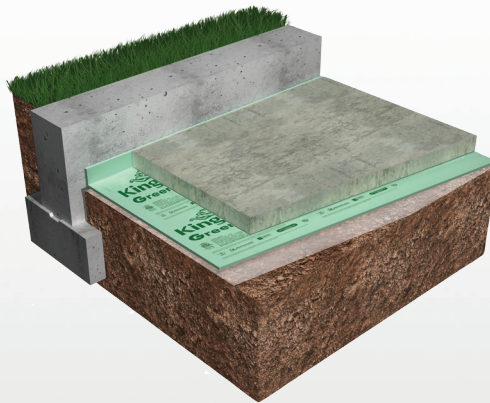




GreenGuard® Type IV XPS Insulation Board

FOR USE AS GENERAL PURPOSE INSULATION FOR ROOFING, WALL AND FOUNDATION APPLICATIONS REQUIRING 25 PSI MINIMUM COMPRESSIVE STRENGTH



- R-value of 5.0 per inch of thickness
- Does not absorb moisture
- Retains insulating properties over time
- Maintains integrity
- Lightweight, durable...easy to use
- Meets and exceeds all Type IV and Type X specifications
- Continuous Insulation (Ci) for walls
- Insulates foundation exteriors and protects against backfill damage
- Non-deleterious material
- Available as score board for cavity wall; 4' x 8' sheet snaps into 16 in., 24 in. or 32 in. widths



GreenGuard® Type IV XPS Insulation Board

Description

Kingspan GreenGuard® Type IV XPS Insulation Board comprises closed-cell extruded polystyrene (XPS) with a minimum compressive strength of 25 psi. It has high water resistance and R-value of 5.0 per inch of thickness. It is available in a square edge board, ship-lap edge board and a score board.

Compliance

Intertek CCRR 1021;
Intertek CCRR 1022;
CA BEARHFTI Lic. No. T 1506;
Florida Product Approval – No. FL14164-R;
CCMC 12722-L;
MN Dept. of Energy – Chapter 7640;
FM Approvals - see RoofNav Roof System Listings;
Miami-Dade County, FL - NOA No. 14-0916.07;
UL LLC – See Classification Certificate A183.

Handling & Storage

When stored outdoors, all product should be protected from exposure to direct sunlight using the original packaging or an opaque, light-colored tarp. Material that has been unwrapped should be covered or rewrapped.

WARNING: This product is combustible. A protective barrier or thermal barrier is required as specified in the appropriate building code. Protect it from exposure to open flame or other ignition sources during shipping, storage and installation.

Health & Safety

Kingspan GreenGuard® Type IV XPS Insulation Board is made of synthetic materials that are generally recognized as not providing a food source for insects, fungus, mold, or mildew. It should always be properly installed and stored.

Kingspan GreenGuard® Type IV XPS Insulation Board is HCFC free. This product should not be used as an exposed interior surface in buildings where people can be expected to be present. An approved fire protection barrier, such as ½" gypsum wallboard or equivalent, should be applied between this product and the interior of such buildings. Fire and building codes should be followed.

All assemblies should be evaluated for effectiveness and location of vapor retarders to avoid condensation and subsequent damage to structures (ASHRAE Handbook of Fundamentals). Since foam sheathings are non-structural, they must be installed over adequately braced framing in accordance with local building codes.

WARNING: Do not stand on or otherwise support your weight on this product unless it is fully supported by a load bearing surface.

Product Data

Property	Test Method	Result
General		
Nominal Thickness (in) ⁴		½, ¾, 1, 1½, 2, 2½, 3
Nominal Board Width (ft) ⁴		2 / 4
Nominal Board Length (ft) ⁴		8 / 9
Edge Profile ⁴		Square or Shiplap
Property Type	ASTM C 578	IV
Compressive Strength, Min. (psi @10% deflection)	ASTM D 1621	25
Water Absorption, Max. (% by volume)	ASTM C 272	0.1
Water Vapor Permeance, Max. ² (perm)	ASTM E 96 (Desiccant Method)	1.5
Density, Min. (lb/ft ³)	ASTM C 303	1.6
Recommended Service Temp., Max. °F		165
Thermal		
Thermal Resistance, R-value ¹ (°F·ft ² ·hr/Btu per in thick)	ASTM C 518 (@75°F Mean Temperature)	5.0
Thermal Conductivity, k-value (Btu·in/hr·ft ² ·°F)	ASTM C 518 (@75°F Mean Temperature)	0.2
Fire & Smoke		
Flame Spread ³	ASTM E 84 / UL723	15 (Class A) 140
Smoke Developed ³		

¹ Specimens are aged and tested in accordance with FTC Rule (16 CFR, Part 460) and ASTM C578.

² Permeance shown is for 1" thick board. Permeance typically decreases as board thickness increases.

³ These numerical flame spread and smoke developed ratings are not intended to reflect hazards presented by this material under actual fire conditions. All applicable building codes must be followed.

⁴ Not all combinations of thickness, length, width and edge profile are available. Please refer to the Kingspan Insulation LLC Purchase Guide.

For more information on specific building product recommendations and installation guidelines, contact your Kingspan Insulation LLC representative.

For the most current product and compliance information go to www.kingspaninsulation.us

Kingspan Insulation LLC believes the information and recommendations herein to be accurate and reliable. However, since use conditions are not within its control, Kingspan Insulation LLC does not guarantee results from use of such products or other information herein and disclaims all liability from any resulting damage or loss. No warranty, express or implied, is given as to the merchantability, fitness for particular purpose, or otherwise with respect to the products referred to.



Kingspan Insulation LLC

2100 RiverEdge Parkway, Suite 175, Atlanta, Georgia 30328
info@kingspaninsulation.us

1-800-241-4402

www.kingspaninsulation.us
www.kingspaninsulation.ca

© Kingspan, the G Device and the Lion Device are Registered Trademarks of the Kingspan Group plc in the US, Canada and other countries. All rights reserved.

© GreenGuard is a Registered Trademark of the Kingspan Group plc in the US. All rights reserved.